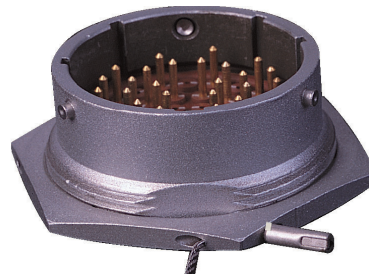
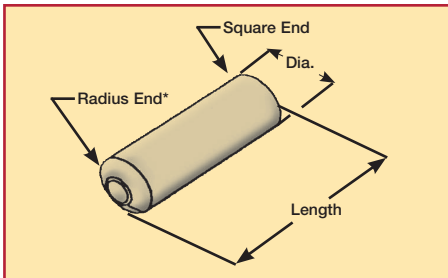


## Elongated Ferrules For Low Profile Fastener Applications



Most Safe-T-Cable® installations can be made with standard components and application tools, however, there are conditions that require modification or alterations to the standard products. By addressing these exceptions, and extending the product lines to incorporate simple solutions to the difficult Safe-T-Cable® applications, DMC has established itself as the industry leader.

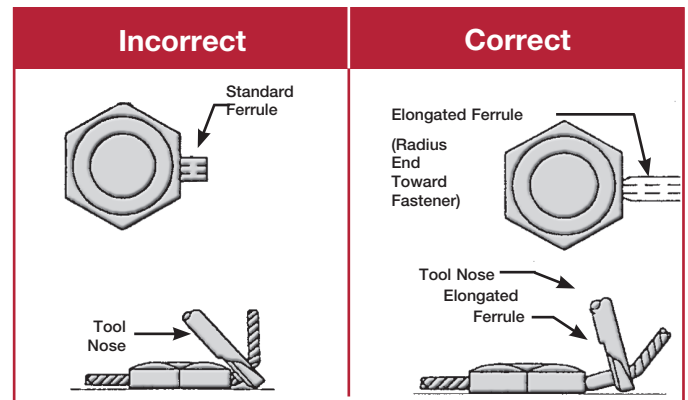
Fasteners that have limited clearance between the safety wire hole (less than .100 inch), and the surface of the component to which the fastener is attached, can present a challenge to the installation of

Safe-T-Cable®. This is due to the clearance required by the application tool nose, adjacent to the fastener.

**A Special Elongated Ferrule** is available for those installations. The longer reach of the ferrule provides a stand off to the tool nose.

Combine that with the radius on the end next to the fastener (radius not required on the F10-08 .022 elongated ferrules due to the small outside diameter). The radius allows the ferrule to be installed at an angle without loss of tension on the cable when the ferrule returns to the straight position.

*\*Radius featured on .032 and .040 ferrule diameters only.*



### Safe-T-Cable® Elongated Ferrules

CABLE DIAMETER (INCHES)	321 CRES	INCONEL 625	INCONEL 600	DIAMETER (INCHES)*	LENGTH
.022	F10-08*	F08-08N*	F09-08*	.090	.185 max
.032	F10-04	F08-04N	F09-04	.105	.325 max
.040	F10-07	F08-07N	F09-07	.105	.325 max